



**SnatchBox<sup>TM</sup>**

USER'S MANUAL

# License Agreement

## Kolishin Audio - SnatchBox™ License Agreement

By installing and using this software, you agree to the following terms:

- This plugin is provided "as is" without warranties of any kind.
- You may use this plugin freely in your personal or commercial audio projects.
  - Redistribution or resale of this plugin without permission is prohibited.
- The developer is not responsible for any damage, loss of data, lawful violations, or system issues resulting from the use of this software.

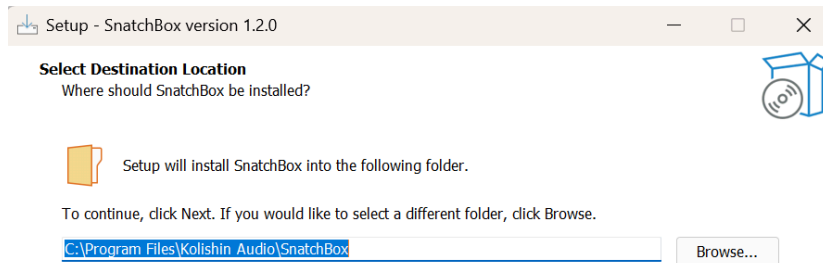
If you do not agree to these terms, please cancel the installation.

2026 © Kolishin Audio. All rights reserved.

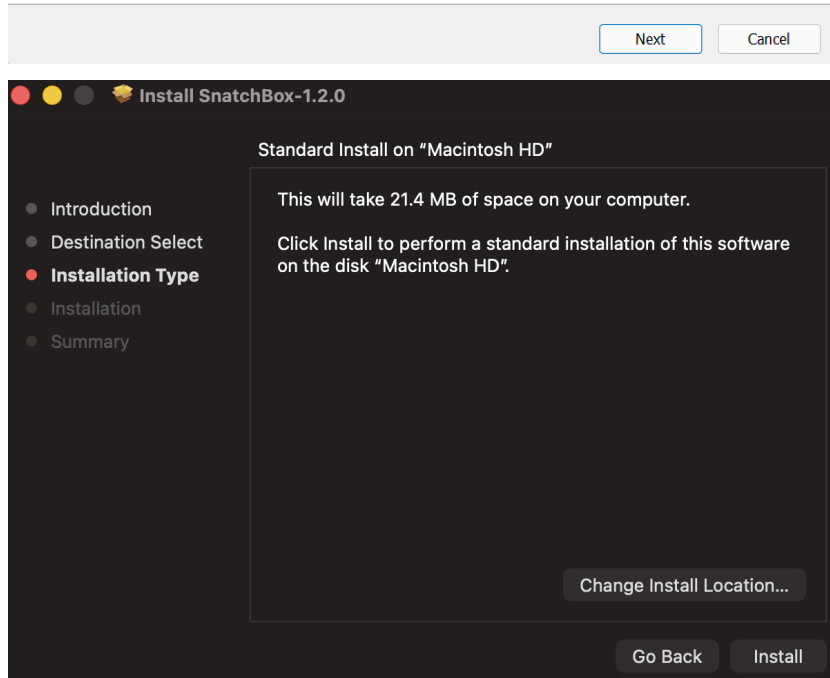
<http://www.kolishinaudio.com>

# Installation

To install SnatchBox, simply run your operating system's designated installer (macOS or Windows). By default, the installer will automatically install all supported plugin formats to their correct host-supported locations. Optionally, you can browse and select a different installation path that your DAW supports.



At least 191.5 MB of free disk space is required.

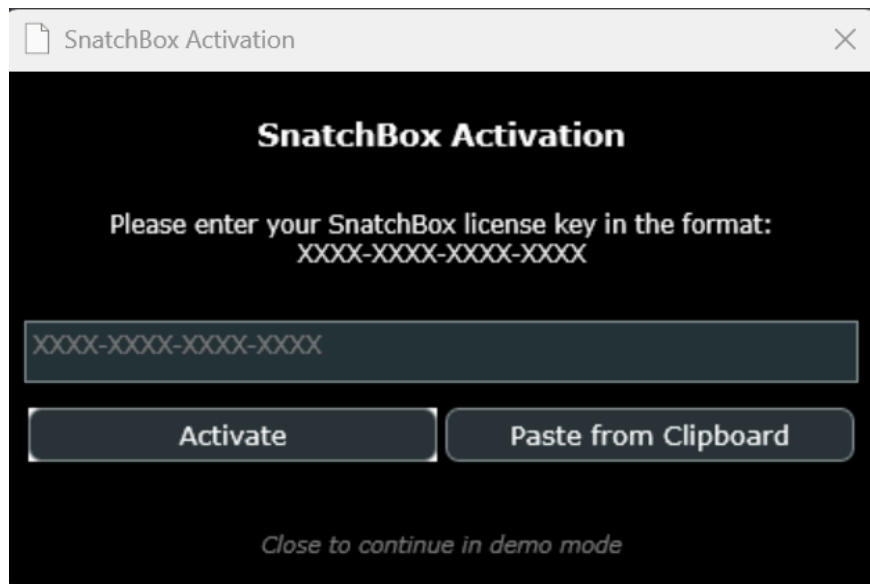


*Note: On first install, Windows may show an "Unknown Installer" SmartScreen warning. Click 'More info' → 'Run anyway'. This warning is expected for our Windows installer and is safe when downloaded from our official site.*

## Licensing, Activation, & Demo Mode

Thank you for your purchase and support! Welcome to the fun!

To activate SnatchBox, load the plugin on any insert channel in your DAW, and copy/paste the digital license key you received via email after purchase.



*Each license is valid for only one user, but can be used on as many machines as the user desires.*

To demo the plugin, simply close the activation window.

Demo mode provides full plugin functionality for 10 minutes before a red demo alert bar appears, and exporting functionality becomes disabled. You can reset the demo by re-initializing the plugin.



## Functions & Features

SnatchBox was built to capture, freeze, and export real-time audio. It automatically adapts to the host's sample rate and automatically detects system audio, which is displayed in the center waveform buffer. The export quality is lossless 24-Bit WAV.



On the lower, left-hand side of the plugin's UI, you will find the main functions for freezing/resuming the buffer, *Capture Mode*, *Buffer Refresh*, *Mid*, *Side*, and *L+R (Left and Right)* modes.

The red-glowing "*Capture Mode*" icon is engaged by default. When clicked, it'll grey out, which enables "*Original Mode*". To learn more about the two modes, please refer to the "*Modes Page*".

Next to the Capture toggle icon is the "*Buffer Refresh*" icon. When clicked, this wipes all audio data within SnatchBox's buffer and gives the user a clean slate to capture from.

Use the zoom slider on the lower-right to zoom into the waveform buffer. And use the vertical slider on the right to adjust the waveform's visual amplitude.

Additionally, the buffer can be frozen/resumed by left-clicking the waveform buffer.

Once paused, a mouse's scroll wheel can be used to zoom in and out of the waveform. Double-clicking the buffer resets all freeze, selection, and zoom states.

To make a selection, simply click and drag within the buffer. To cancel a selection, either click out of the selection or right-click the selection.

Drag + middle-click to pan the waveform while in a zoomed state.

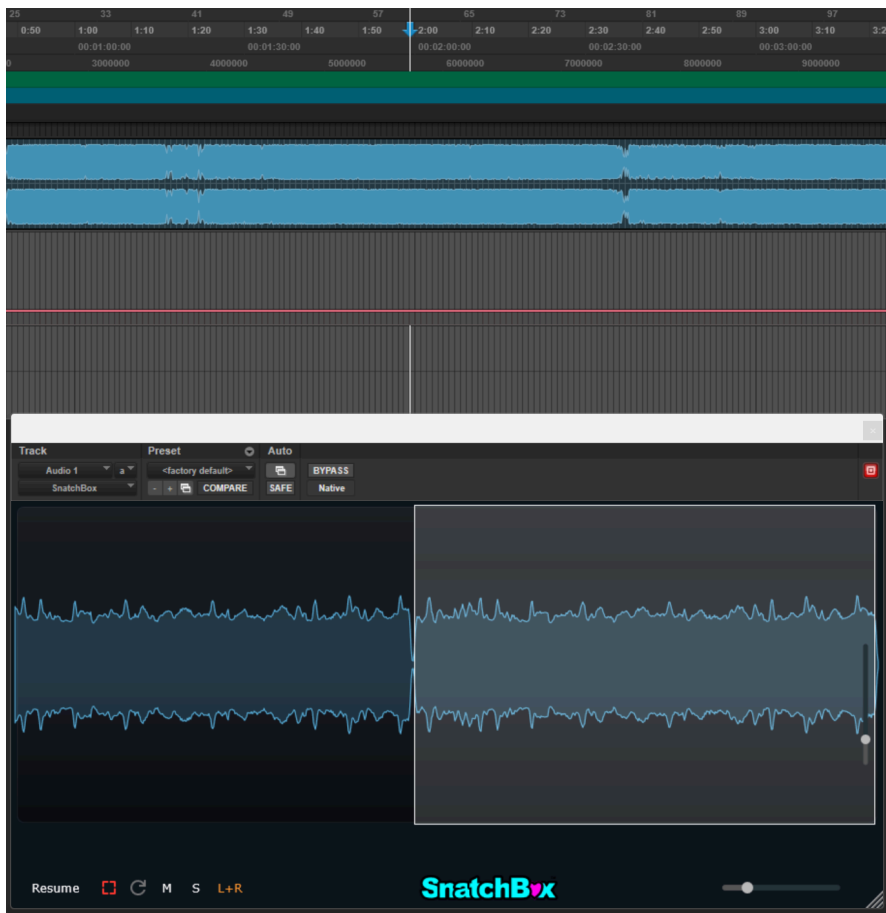
# Capture Modes

SnatchBox includes two ways of capturing audio: “*Original*” and “*Capture*”.

“*Capture Mode*” allows the user to quickly capture audio, according to their host's audio playback - usually dictated by the DAW's playhead. Perfect for real-time captures and resampling.

Click play, SnatchBox captures, hit stop, and the capture stops accordingly.

SnatchBox then intelligently auto-selects the most recent capture so the user can effortlessly drag and drop the sample selection back into their DAW for further processing.



Alternatively, if the user prefers to make a manual selection, they can easily click and drag to make a new selection.

“Original Mode” turns SnatchBox into a free-running retrospective recording tool. Here, no auto-selections are made, and it’s left up to the user to freeze and creatively make selections.



In both modes, SnatchBox will automatically cycle after it has reached its maximum allotted recording time. (See “Preferences” page for more info.)

Mid, Side, and L+R modes are supported in either mode.

A note on Capture Mode: This feature isn’t directly tied to the host’s playhead timing or timecode; it uses the host’s output to intuitively register and detect the signal. Therefore, it will not capture accurately if the beginning of a playback is pure silence.

#### *REAPER USERS NOTE:*

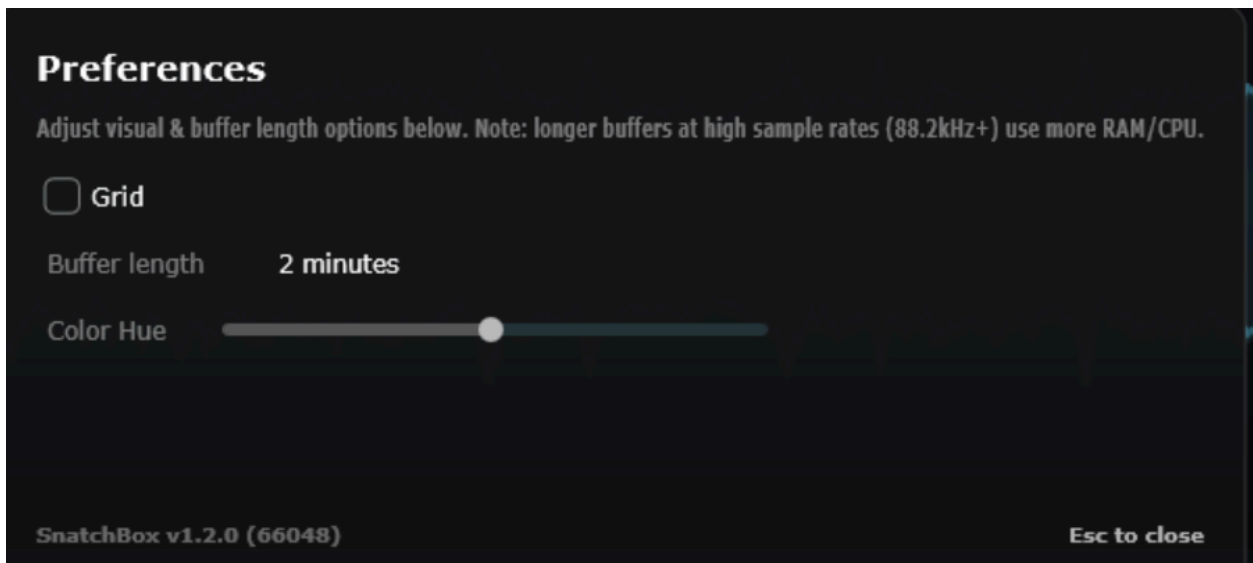
*If SnatchBox is inserted on a normal track, disable Anticipative FX on that track to avoid chopped or softened transients.*

*Right-click track -> Track performance options -> Prevent anticipative FX.*

# Preferences

SnatchBox includes a small preference window that's accessible via clicking the title logo.

Here, the user can adjust the waveform buffer color hue with the horizontal slider, adjust the plugin's buffer length to either 2, 5, or 10 minutes, and/or toggle a grid for more rigid selections. (The grid function does not follow the host's grid tempo.)



## M/S & L+R Modes

When the “M” button is clicked, it allows SnatchBox to capture and export only the center Mid (mono) signal of a source. This is visually displayed in the buffer, as the waveform will shift to display mid-only information, along with a central purple-hued indicator:



When the “S” button is clicked, it allows SnatchBox to capture and export only the wide Side (stereo) signal of a source. This is visually displayed in the buffer, as the waveform will shift to display side-only information, along with two horizontal, teal-hued indicators:



The “L+R Mode” captures the typical left and right channels of a signal & is enabled by default.

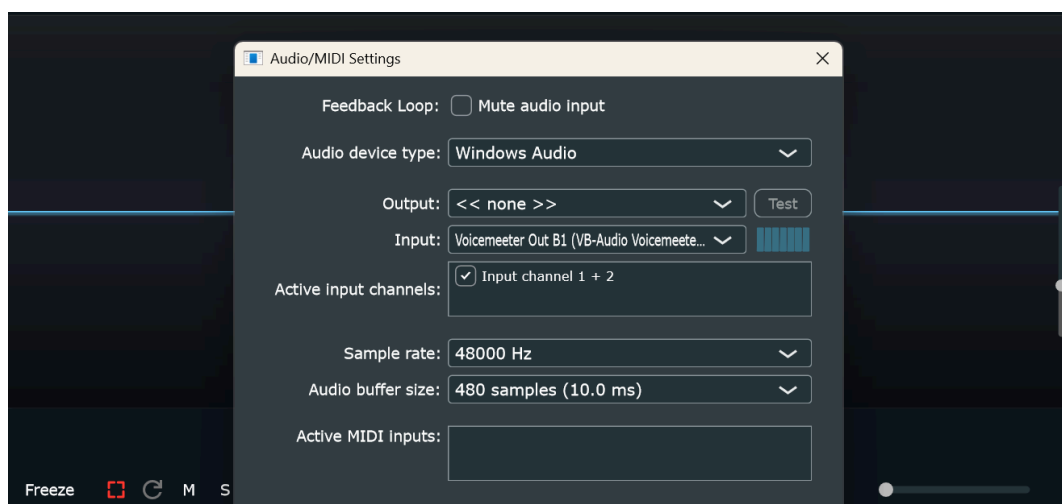
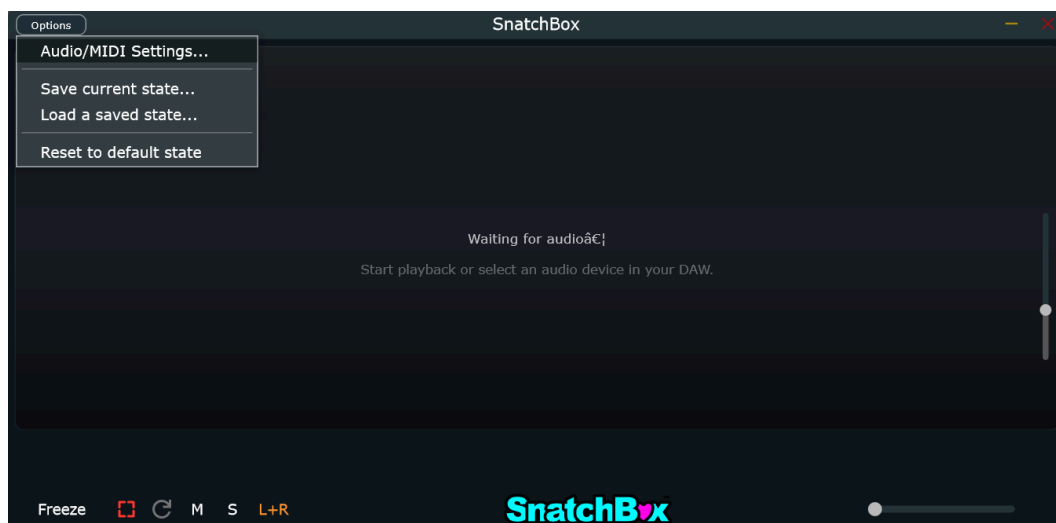
# Standalone Mode

Snatchbox works great out of the DAW as well! It allows users to capture and record any system audio from applications, web browsers, etc.

## **Requirements:**

Users will need a loopback application, such as [BlackHole](#) (for Mac) or [Voicemeeter](#) (Windows), or have a loopback-capable audio interface.

Enable your system's loopback device and set SnatchBox to receive its audio input. (Output is optional.)



*NOTE: Due to the lack of a DAW host, the use of Capture Mode isn't ideal in Standalone - It's recommended to use "Original Mode" instead.*